



手动操作机构使用说明书

MANUAL OPERATION MECHANISM OPERATION MANUAL

CM3系列
CM3 series

打开包装, 应有下列零部件

Open the package, there are following parts

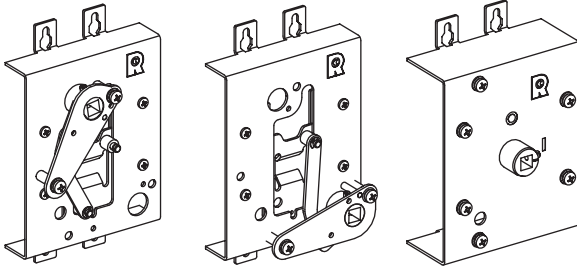
手动操作机构 (手操)

Manual operation mechanism

(上偏心式)
upward

(下偏心式)
downward

(中心式)
center



附件:

Accessories:

数量 (规格)

Numbers(specifications)

型号 Type	配用断路器 Suitable circuit-breaker	操作手柄 Operation handle	方轴 Square shaft	安装螺钉 Mounting screws	使用说明书 (含合格证) Operation manual (including certificate)
FZC1/CM3-63	CM3-63	x1	x1	x4 (M3X70)	x1
FZC1/CM3-100C	CM3-100C	x1	x1	x4 (M3X70)	x1
FZC1/CM3DC-100	CM3DC-100	x1	x1	x2 (M3X70)	x1
FZC1/CM3-100	CM3-100L/M/H	x1	x1	x4 (M3.5X30)	x1
FZC1/CM3-250C	CM3-250C	x1	x1	x4 (M3X30)	x1
FZC1/CM3-250	CM3-250	x1	x1	x4 (M4X40)	x1
FZC1/CM3DC-250	CM3DC-250	x1	x1	x4 (M4X40)	x1
FZC1/CM3-400	CM3-400, CM3E-400, CM3L-400 CM3DC-400, CM3Z-400	x1	x1	x4 (M3X16)	x1
FZC1/CM3-630	CM3-630, CM3DC-630	x1	x1	x4 (M3X16)	x1
FZC1/CM3-800	CM3-800, CM3L-630, CM3E-800 CM3DC-800, CM3Z-800	x1	x1	x4 (M3X16)	x1

操作手柄规格代号

Operation handle specification code

	A型	F型
操作手柄 Operation handle		
代号 Code	A	F

方轴长度代号

The square shaft length code

L	150	250	300	500
代号 (无代号) Code No code	Z2	Z3	Z7	

重要注意事项

Important cautions

⚠ 重要注意事项 Important cautions

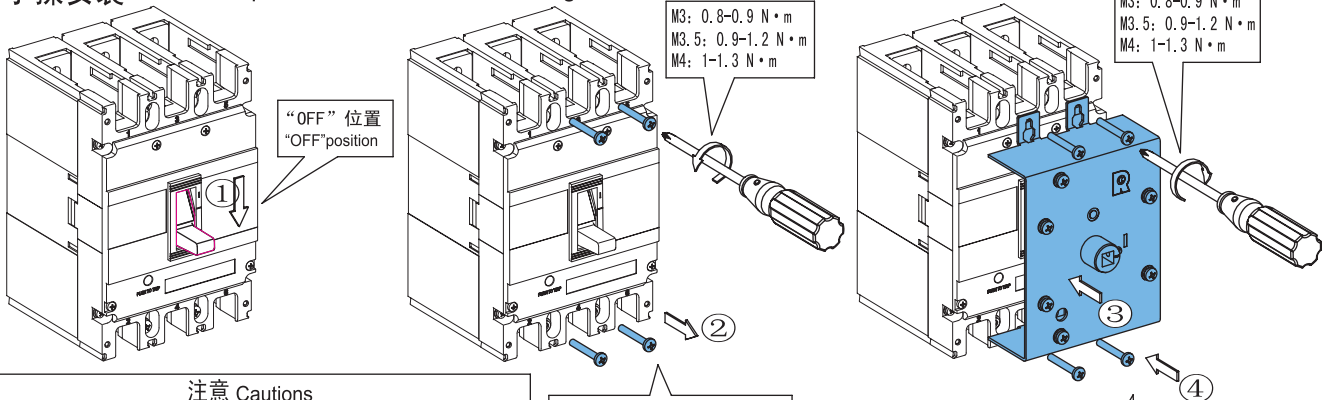
1. 本装置必须由合格的电工进行安装。我们不承担任何因未遵循本文档中的指南而导致的责任。
2. 请选用合适的安装工具进行安装操作。安装工具请自备。
- 1.This device must be installed by qualified electrician. We will not accept any responsibility for failure to follow the guidelines in this document.
- 2.Please select suitable tools for installation. The installation tools should be prepared by yourself.

请检查手操零部件是否完好, 如有缺损请及时与本公司联系解决。

请对照断路器侧贴或包装盒贴核对手操规格。

Please check that whether the components of manual operator are in good condition. If there is any defect, please contact the company in time.
Please verifying manual operation mechanism specification contrasting side paste of circuit breaker or box paste of packing box.

手操安装 Manual operation mechanism mounting



注意 Cautions

断路器手柄须嵌入手操滑块中。否则会导致断路器不动作或损坏!
The handle of circuit breaker must be inserted in manual operation mechanism's slide, otherwise may lead to circuit breaker not operation or damage!

按图示拆卸盖固定螺钉
Disassembling fixed screws of cover according diagram

用安装螺钉紧固
Fastening using mounting screws

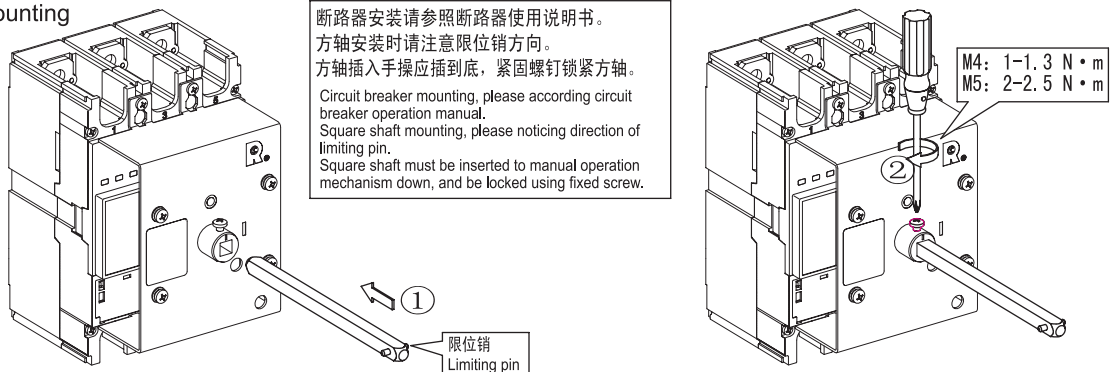
当手动操作机构与断路器一起订货时, 手操安装操作在出厂前已完成。

特殊情况手操单独订货时, 安装请用户自行操作。

Before leaving factory, manual operation mechanism is mounted, when manual operation mechanism is ordered with circuit breaker.
Please self-mounting, when manual operation mechanism is ordered alone.

方轴安装

Square shaft mounting



断路器安装请参照断路器使用说明书。

方轴安装时请注意限位销方向。

方轴插入手操应插到底, 紧固螺钉锁紧方轴。

Circuit breaker mounting, please according circuit breaker operation manual.
Square shaft mounting, please noticing direction of limiting pin.

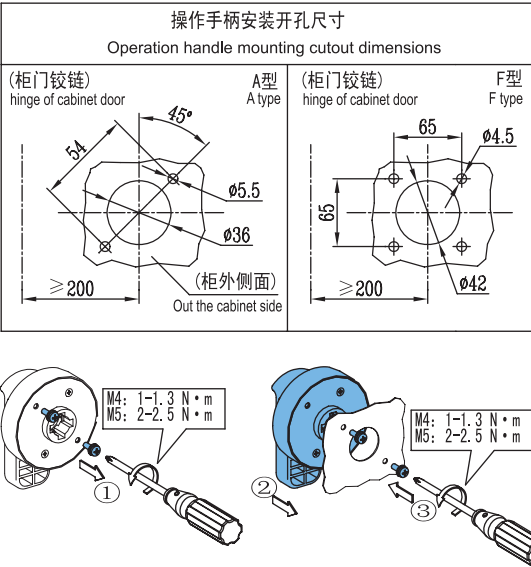
Square shaft must be inserted to manual operation mechanism down, and be locked using fixed screw.

限位销
Limiting pin

操作手柄安装

Operation handle mounting

操作手柄(方轴中心)位置尺寸 Operation handle (square shaft center) position dimensions			
	型号 Type	A	B
	FZC1/CM3-63-B	18.5	5
	FZC1/CM3-100C-B		
	FZC1/CM3DC-100-B		
	FZC1/CM3-100-A	35	11.5
	FZC1/CM3-100-B	37	30
	FZC1/CM3-250C-A	35	11.5
	FZC1/CM3-250C-B	45	32
	FZC1/CM3-250-A	35	11.5
	FZC1/CM3DC-250-A		
X-X为断路器高度方向中心、Y-Y为断路器操作手柄宽度方向中心 X-X is center of circuit breaker altitude direction Y-Y is center of circuit breaker operation handle width direction.	FZC1/CM3-250-B	45	32
	FZC1/CM3DC-250-B		
	FZC1/CM3-400-A	60.5	15
	FZC1/CM3-630-A	60.5	15
	FZC1/CM3-800-A	65.5	15

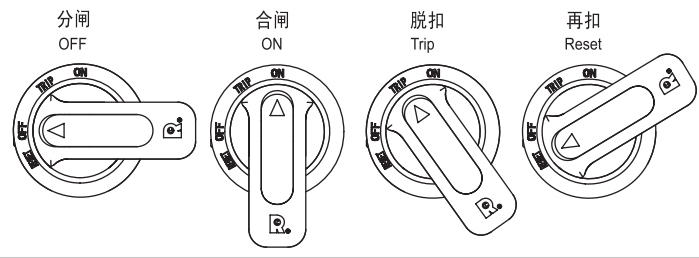


手操操作

Manual operation mechanism operation

确认断路器处于分闸状态(若配有欠压脱扣器, 请将欠压脱扣器通电后拨至分闸状态)。
操作手操操作手柄至分闸位置, 然后可关闭柜门。
操作手操操作手柄进行合、分闸操作。

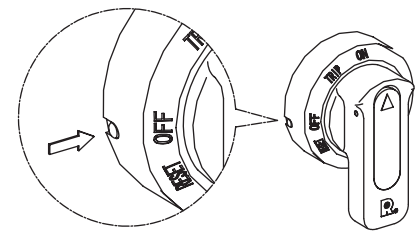
Ensuring circuit breaker is off (if with under voltage release, under voltage release must be energized).
Operation handle of manual operation mechanism is off position, the cabinet door may be closed.
Close and open operations are made on operation handle of manual operation mechanism.



紧急解锁 Emergency unlock

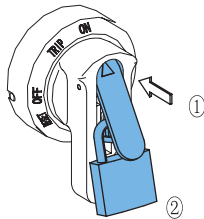
断路器保持合闸状态, 按压紧急解锁可打开柜门。

When circuit breaker is on, cabinet door can be opened by pushing emergency unlock.



挂锁

Padlock



挂锁请自备。
挂锁钩环直径 $\phi 6-\phi 8$ 。
Padlocks are self-prepared.
Shackle diameter $\phi 6-\phi 8$.

常熟开关制造有限公司(原常熟开关厂)

江苏省常熟市建业路8号

8008282528(技术咨询), 0512-52846869(服务热线)

Changshu switchgear MFG.CO., LTD.

(former changshu switchgear plant)

No.8 Jianye road changshu

8008282528(technical support), 0512-52846869(service line)